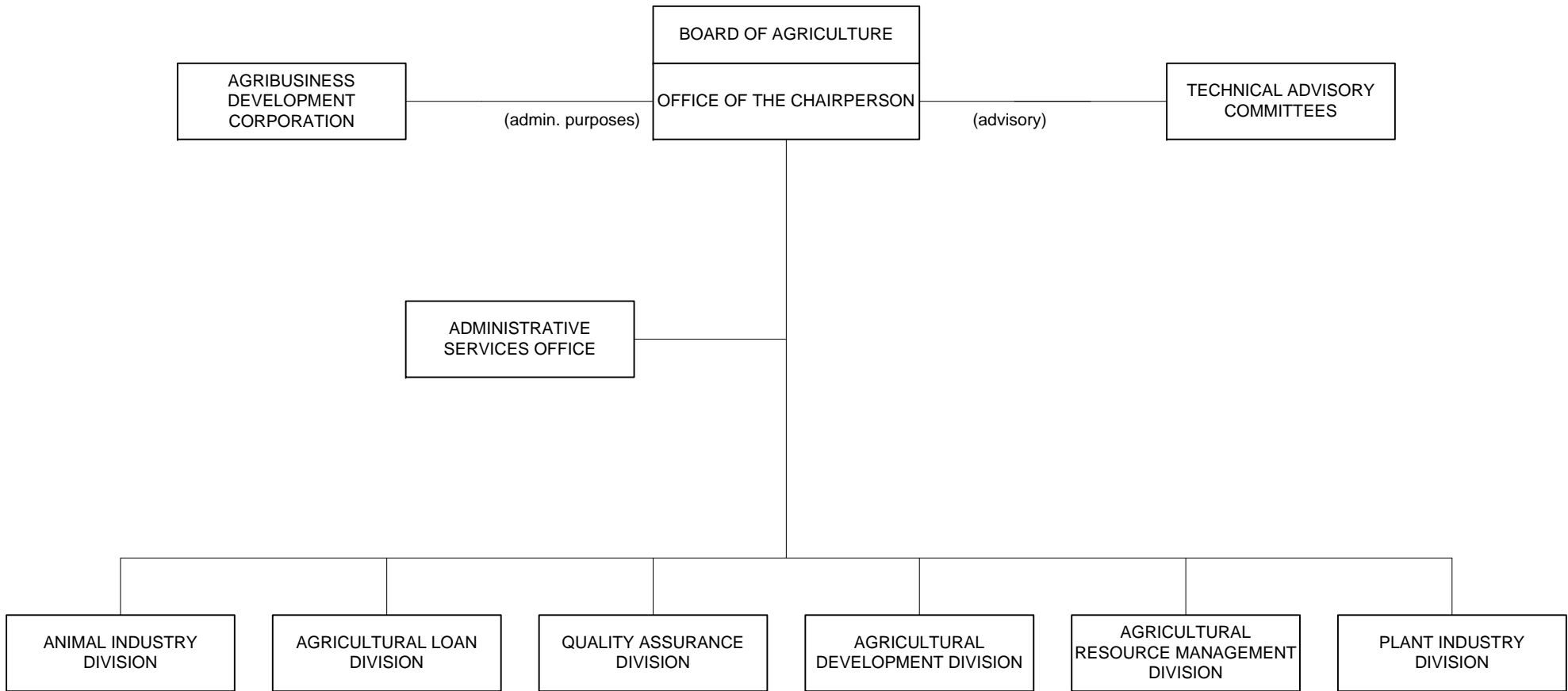


STATE OF HAWAII
DEPARTMENT OF AGRICULTURE
ORGANIZATION CHART



DEPARTMENT OF AGRICULTURE MAJOR FUNCTIONS

- Carries out programs to conserve, develop, and utilize the agricultural resources and infrastructure of the State and facilitates the transition of plantation agriculture to diversified farming.
- Enforces laws, and formulates and enforces rules and regulations to further control the management of these resources.
- Reviews and develops agricultural goals and objectives compatible with statewide expansion and diversification of Hawaii's agricultural base.
- Prevents the introduction of plant pests and diseases, provides certification services to facilitate the export of certain plant materials, and controls and eradicates insects and noxious weeds and controls the distribution and usage of pesticides.
- Administers the aquaculture development, state animal health, and agricultural and aquacultural loan programs.
- Maintains official State primary measurement standards; ensures accuracy of commercial measuring devices.
- Establishes and enforces grade standards for agricultural commodities producers in the State in cooperation with the industry, and achieves stability within the State milk industry by ensuring the availability of an adequate supply of wholesale milk for the consuming public.
- Supports the marketing of various agricultural commodities.

MAJOR PROGRAM AREAS

The Department of Agriculture has programs in the following major program areas:

Economic Development

AGR 101	Financial Assistance for Agriculture
AGR 122	Plant Pest and Disease Control
AGR 131	Rabies Quarantine
AGR 132	Animal Disease Control
AGR 141	Agricultural Resource Management
AGR 151	Quality and Price Assurance
AGR 153	Aquaculture Development
AGR 161	Agribusiness Development and Research

AGR 171	Agricultural Development and Marketing
AGR 192	General Administration for Agriculture

Environmental Protection

AGR 846	Pesticides
---------	------------

Individual Rights

AGR 812	Measurement Standards
---------	-----------------------