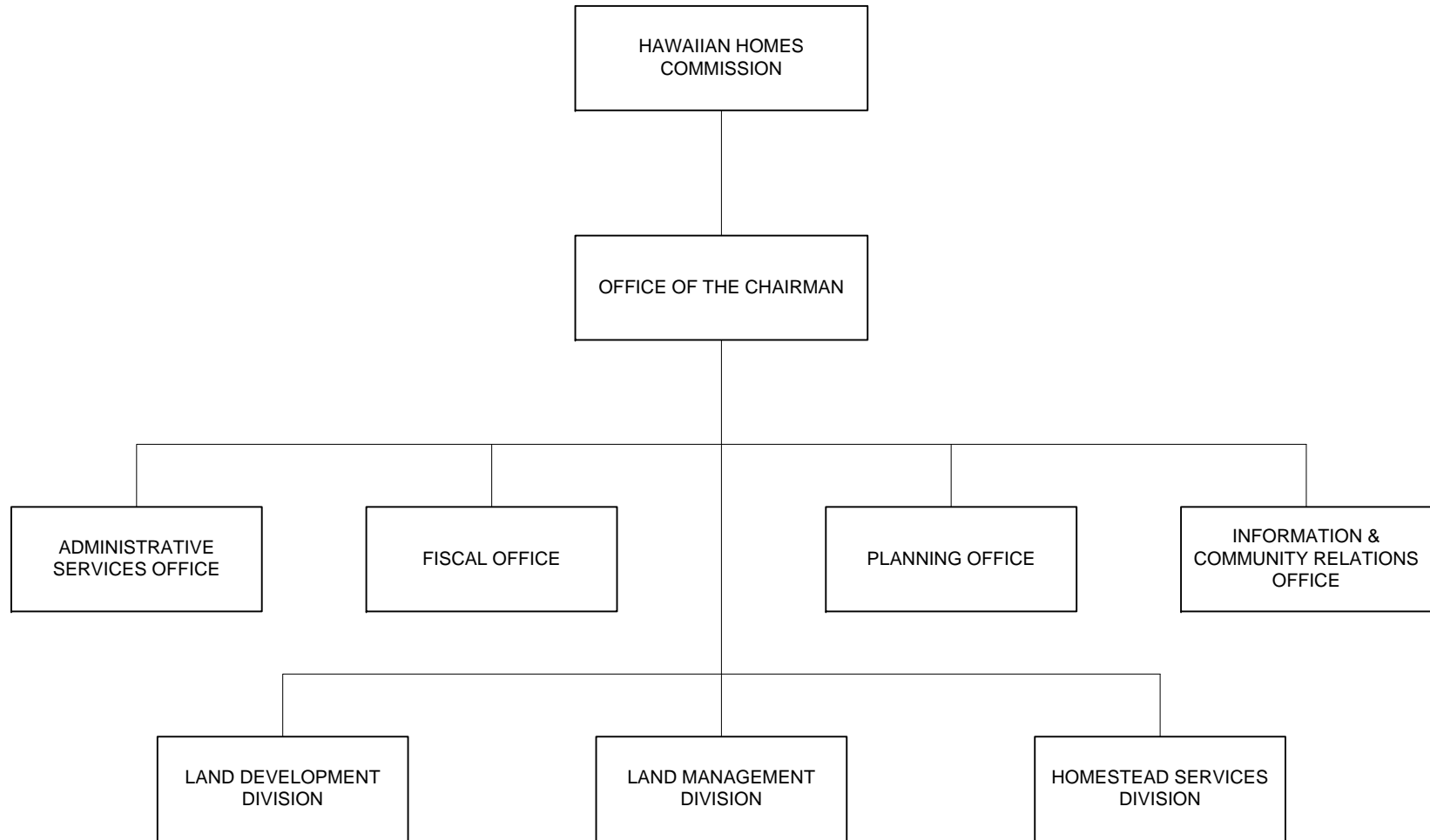


STATE OF HAWAII
DEPARTMENT OF HAWAIIAN HOME LANDS
ORGANIZATION CHART



DEPARTMENT OF HAWAIIAN HOME LANDS MAJOR FUNCTIONS

- Identifying and assessing the needs of beneficiaries of the Hawaiian Homes Commission Act (HHCA) through research and planning; compiling data needed for the development and utilization of Hawaiian home lands and other physical resources of the Hawaiian Homes Trust; identifying Hawaiian home lands by physical characteristics, lands use, and planned use of the lands; and developing and updating regional master plans for designated areas.
- Developing, marketing, disposing of, and managing Hawaiian home lands not immediately needed or not suitable for homestead purposes by issuing general leases, revocable permits, licenses, and rights-of-entry to generate income to finance homestead lot development activities.
- Developing Hawaiian home lands for homesteading and income-producing purposes by designing and constructing off-site and on-site improvements.
- Developing waiting lists of applicants for homestead leases; awarding homestead leases; providing loans for home building, repair, and replacement and for development of farms and ranches; managing homestead areas on the islands of Oahu, Hawaii, Maui, Molokai, Kauai and Lanai; and providing for the maintenance, repair, and operation of water systems, roads, and facilities.

MAJOR PROGRAM AREAS

The Department of Hawaiian Home Lands has a program in the following major program area:

Social Services

HHL 602 Planning and Development for Hawaiian
Homesteads