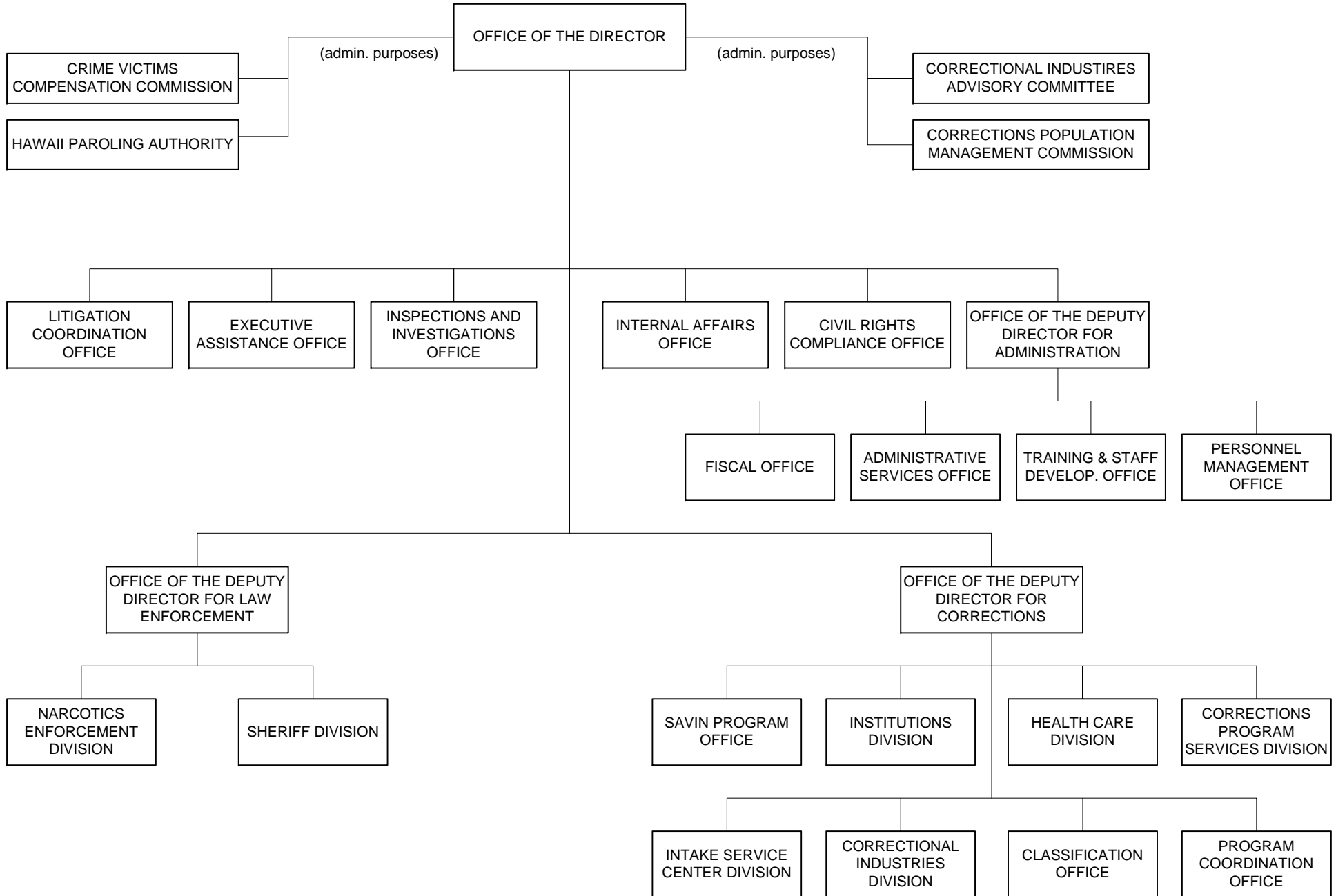


STATE OF HAWAII
DEPARTMENT OF PUBLIC SAFETY
ORGANIZATION CHART



DEPARTMENT OF PUBLIC SAFETY MAJOR FUNCTIONS

- Administers various public safety programs that are designed to prevent and deter criminal acts, and to incarcerate and rehabilitate criminal offenders.
- Administers the operations of the seven correctional institutions throughout the State for the custody and care of offenders detained or committed by the courts to the department in safe, clean, and humane conditions of confinement.
- Provides a continuum of treatment programs and services to facilitate the reintegration of offenders back into the community.
- Administers a correctional industries program that employs inmates in work programs that produce goods and services for government agencies and nonprofit organizations, and affords inmates job training and work experience to enhance their employment prospects when they return to the community.
- Determines minimum terms of imprisonment for convicted felons; grants conditional release of felons from institutions under conditions of parole; and reports on petitions for pardon referred by the Governor.
- Administers diversionary programs as well as alternatives to incarceration; conducts pretrial investigations and bail evaluations; and supervises offenders conditionally released by the courts.
- Administers statewide law enforcement programs that protect the public as well as safeguard State property and facilities; enforces laws, rules, and regulations to prevent and control crime; and provides law enforcement services at the Honolulu International Airport.
- Regulates the manufacture, distribution, sale, prescription, and dispensing of controlled substances in the State by issuing applications and permits to conduct transactions; and investigates and enforces laws, rules and regulations relative to controlled substances.
- Mitigates the suffering and losses of victims and survivors of certain crimes by providing them with compensation for crime related losses; and, compensates private citizens (Good Samaritans) who suffer personal injury or property damage in the course of preventing a crime or apprehending a criminal.

MAJOR PROGRAM AREAS

The Department of Public Safety has programs in the following major program area:

Public Safety

Corrections

PSD 402 Halawa Correctional Facility
PSD 404 Waiawa Correctional Facility
PSD 405 Hawaii Community Correctional Center
PSD 406 Maui Community Correctional Center
PSD 407 Oahu Community Correctional Center
PSD 408 Kauai Community Correctional Center
PSD 409 Women's Community Correctional Center
PSD 410 Intake Service Centers
PSD 420 Corrections Program Services
PSD 421 Health Care
PSD 422 Hawaii Correctional Industries
PSD 808 Non-State Facilities

Law Enforcement

PSD 502 Narcotics Enforcement
PSD 503 Sheriff

Other

PSD 611 Adult Parole Determinations
PSD 612 Adult Parole Supervision and Counseling
PSD 613 Crime Victim Compensation Commission
PSD 900 General Administration