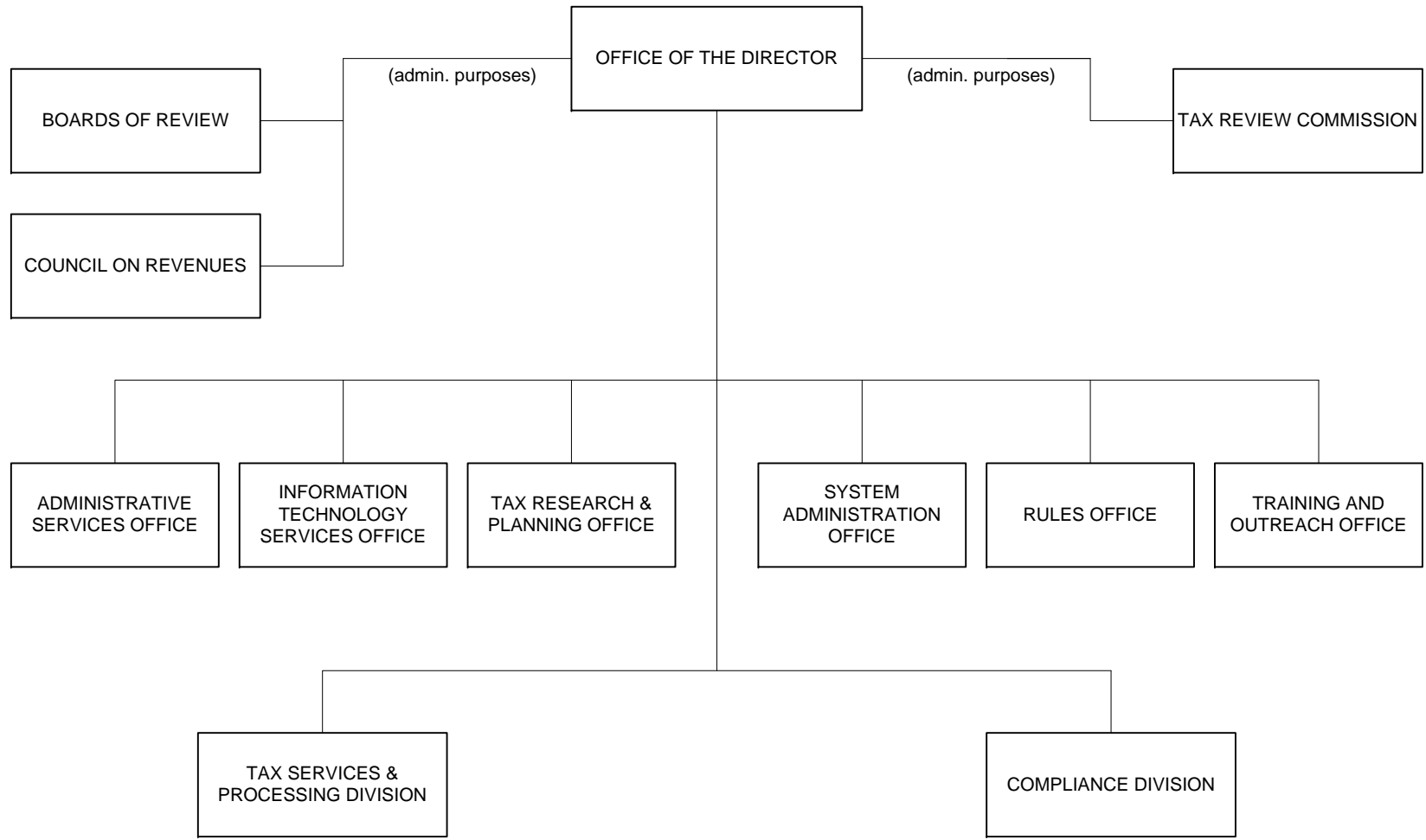


STATE OF HAWAII  
DEPARTMENT OF TAXATION  
ORGANIZATION CHART



## **DEPARTMENT OF TAXATION MAJOR FUNCTIONS**

- Administers and enforces the tax laws of Hawaii and the collection of taxes and other payments.
- Coordinates a centralized system for receiving and processing of all tax returns, payments and documents.
- Provides one-stop customer service, assistance and information on all taxes administered by the department to customers who walk in, call-in, correspond or e-mail.
- Administers a comprehensive and uniform compliance program based on self-assessment and voluntary compliance.
- Conducts audits and investigations of all types of tax returns.
- Conducts and enforces collection of delinquent taxes by appropriate collection procedures.
- Plans, organizes and coordinates a tax research and tax planning program.
- Provides administrative and research support to the Council on Revenues which prepares revenue estimates for the State on a quarterly basis.

## **MAJOR PROGRAM AREAS**

The Department of Taxation has a program in the following major program area:

### **Government-Wide Support**

TAX 100	Compliance
TAX 105	Tax Services and Processing
TAX 107	Supporting Services – Revenue Collections